




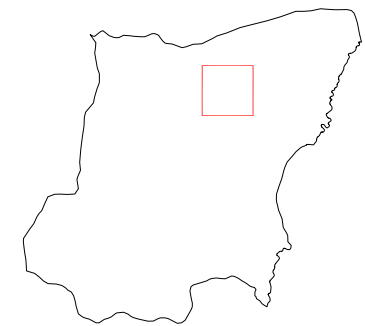


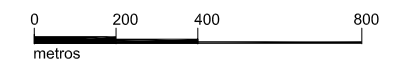
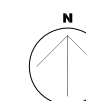
-  Sistema Viário Básico
-  Ferrovia
-  Hidrografia
-  Perímetro Urbano
-  Praças, Áreas Verdes, Canteiros

Localização da área urbana no Município



Cartografia Urbana

09



Cândido Mota - Julho/2006

Fontes:

- Prefeitura Municipal de Cândido Mota -
- Secretaria de Agricultura e Obras
- Macroplanejamento



Prefeitura
Municipal de
Cândido Mota



Fundação Paulista de
Tecnologia e Educação